



WEEKLY SCREENINGS

Week ending: Wednesday 3rd October 2018

"Everything I learned I learned from the movies" – Audrey Hepburn

Monday 24th September 2018

Movie Title/Rating	Screening Time
A Simple Favour (M)	5.50pm
Ladies In Black (PG)	8.10pm

Tuesday 25th September 2018

Movie Title/Rating	Screening Time
Book Club (M)	1.40pm
Ladies In Black (PG)	3.45pm
McQueen (M)	6.00pm
A Simple Favour (M)	8.15pm

Wednesday 26th September 2018

Movie Title/Rating	Screening Time
A Simple Favour (M)	1.30pm
Book Club (M)	3.50pm
Ladies In Black (PG)	6.00pm
The Wife (M)	8.15pm
Wednesday Night Special - tickets \$10	

Thursday 27th September 2018

Movie Title/Rating	Screening Time
The Wife (M)	1.45pm
Leave No Trace (PG) NEW	3.45pm
Ladies In Black (PG)	6.00pm
A Simple Favour (M)	8.15pm

Friday 28th September 2018

Movie Title/Rating	Screening Time
Ladies In Black (PG)	1.50pm
The Wife (M)	4.00pm
A Simple Favour (M)	6.00pm
Leave No Trace (PG)	8.20pm

Saturday 29th September 2018

Movie Title/Rating	Screening Time
Ladies In Black (PG)	11.15am
A Simple Favour (M)	1.30pm
McQueen (M)	3.50pm
Leave No Trace (PG)	6.00pm
Ladies In Black (PG)	8.15pm

Sunday 30th September 2018

Movie Title/Rating	Screening Time
Leave No Trace (PG)	10.40am
Ladies In Black (PG)	12.50pm
A Simple Favour (M)	3.00pm
Ladies In Black (PG)	5.20pm
The Wife (M)	7.30pm

Monday 1st October 2018

Movie Title/Rating	Screening Time
Ladies In Black (PG)	6.00pm
Leave No Trace (PG)	8.15pm

Tuesday 2nd October 2018

Movie Title/Rating	Screening Time
Leave No Trace (PG)	1.30pm
Book Club (M) FINAL	3.40pm
A Simple Favour (M)	5.50pm
Ladies In Black (PG)	8.10pm

Wednesday 3rd October 2018

Movie Title/Rating	Screening Time
McQueen (M)	1.40pm
Ladies In Black (PG)	3.50pm
Leave No Trace (PG)	6.00pm
A Simple Favour (M)	8.15pm
Wednesday Night Special - tickets \$10	

Licensed Bar and Snacks available

15 Hardinge Road, Ahuriri (next to Milk & Honey)

For reservations please call: 06 833 6011 or email: info@globenapier.co.nz

www.globenapier.co.nz



A Simple Favour (117mins) M Suitable for Mature Audiences: Sex scenes, violence, drug use, offensive language

A SIMPLE FAVOUR is a stylish post-modern film noir that centers around Stephanie (Anna Kendrick), a mommy blogger who seeks to uncover the truth behind her best friend Emily's (Blake Lively) sudden disappearance from their small town. Stephanie is joined by Emily's husband Sean (Henry Golding) in this thriller filled with twists and betrayals.



Book Club (104mins) M Suitable for Mature Audiences: Offensive language, sexual references **FINAL**

Diane (Diane Keaton) is recently widowed. Vivian (Jane Fonda) enjoys her men with no strings attached. Sharon (Candice Bergen) is still working through a decades old divorce. Carol's (Mary Steenburgen) marriage is in a slump. Four lifelong friends' lives are turned upside down to hilarious ends when their book club tackles the infamous *Fifty Shades of Grey*.



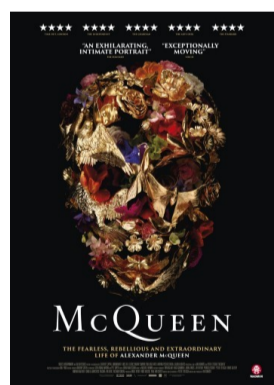
Ladies In Black (109mins) PG Parental Guidance Recommended: Coarse language

Sydney, 1959. Shy schoolgirl Lisa (Angourie Rice) takes a summer job at prestigious department store Goode's. There she meets the "ladies in black" who will change her life forever. Beguiled and influenced by Magda (Julia Ormond), the vivacious manager of the high-fashion floor, and befriended by fellow sales ladies Patty and Fay, Lisa is awakened to a world of possibilities.



Leave No Trace (109mins) PG Parental Guidance Recommended: Drug references **NEW**

Will (Ben Foster) and his 13 year-old daughter Tom (Thomasin Harcourt McKenzie) are living in a paradisiacal existence in a vast urban park in Portland, Oregon, when a small mistake derails their lives forever. After years living off the grid, the pair are suddenly forced back into traditional housing. After clashing with their new surroundings, they embark on a journey back to the wild.



McQueen (111mins) M Mature Audiences: Offensive language, nudity, rape references, suicide references

Alexander McQueen's rags-to-riches story is a modern-day fairy tale, laced with the gothic. Mirroring the savage beauty, boldness and vivacity of his design, this documentary is an intimate revelation of his McQueen's own world, both tortured and inspired, which celebrates a radical and mesmerizing genius of profound influence.



The Wife (100mins) M Suitable for Mature Audiences: Offensive language, sexual references

Joan Castleman (Glenn Close) is a perfectly devoted wife. Forty years she has spent sacrificing her own talent, dreams and ambitions to her husband Joe's (Jonathan Pryce) skyrocketing literary career, ignoring his infidelities and excuses with grace and humor. On the eve of Joe's receipt of the Nobel Prize for Literature, Joan's coup de grace is to confront the biggest sacrifice of her life and secret of his career.