



# WEEKLY SCREENINGS

Week ending: Wednesday 23rd October 2019

"Everything I learned I learned from the movies" – Audrey Hepburn

## Monday 14th October 2019

Movie Title/Rating	Screening Time
Downton Abbey (PG)	5.50pm
Maiden (M)	8.15pm

## Tuesday 15th October 2019

Movie Title/Rating	Screening Time
Downton Abbey (PG)	1.20pm
Yuli (M) <i>subtitled</i> <b>FINAL</b>	3.50pm
Amazing Grace (G)	6.00pm
Downton Abbey (PG)	7.50pm

## Wednesday 16th October 2019

Movie Title/Rating	Screening Time
The Goldfinch (M)	1.00pm
Downton Abbey (PG)	3.50pm
Maiden (M)	6.15pm
The Farewell (PG) <i>partly subtitled</i> <b>FINAL</b> Wednesday Night Special - tickets \$10	8.15pm

## Thursday 17th October 2019

Movie Title/Rating	Screening Time
Amazing Grace (G)	1.00pm
Maiden (M)	2.45pm
Judy (M) <b>NEW</b>	8.20pm

## Friday 18th October 2019

Movie Title/Rating	Screening Time
Downton Abbey (PG)	1.15pm
Judy (M)	3.40pm
Judy (M)	6.00pm
Downton Abbey (PG)	8.20pm

## Saturday 19th October 2019

Movie Title/Rating	Screening Time
Judy (M)	11.20am
Amazing Grace (G)	1.40pm
Downton Abbey (PG)	3.35pm
Judy (M)	6.00pm
Maiden (M)	8.20pm

## Sunday 20th October 2019

Movie Title/Rating	Screening Time
Downton Abbey (PG)	10.30am
Maiden (M)	1.00pm
Judy (M)	3.00pm
Downton Abbey (PG)	5.20pm
Judy (M)	7.45pm

## Monday 21st October 2019

Movie Title/Rating	Screening Time
Judy (M)	3.30pm
Downton Abbey (PG)	5.50pm

## Tuesday 22nd October 2019

Movie Title/Rating	Screening Time
The Goldfinch (M)	1.20pm
Amazing Grace (G)	4.10pm
Judy (M)	6.00pm
Downton Abbey (PG)	8.20pm

## Wednesday 23rd October 2019

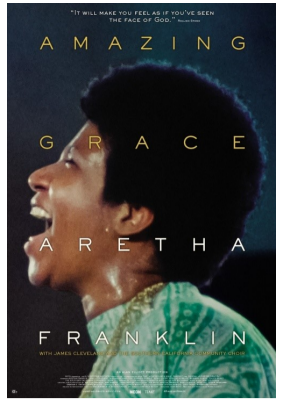
Movie Title/Rating	Screening Time
Judy (M)	1.30pm
Downton Abbey (PG)	3.50pm
Maiden (M)	6.15pm
The Goldfinch (M) <b>FINAL</b> Wednesday Night Special - tickets \$10	8.15pm

Licensed Bar and Snacks available

15 Hardinge Road, Ahuriri (next to Milk & Honey)

Ticket sales: [www.globenapier.co.nz](http://www.globenapier.co.nz)

Enquiries: 06 833 6011



### **Amazing Grace (88mins)**

G

Suitable for General Audiences

This music documentary captures Queen of Soul Aretha Franklin as she records the most successful gospel album of all time, *Amazing Grace*, with James Cleveland and the Southern California Community Choir. Recorded at The New Bethel Baptist Church in L.A. in January 1972, *AMAZING GRACE* captures an elegiac moment in American musical history.



### **Downton Abbey (122mins)**

PG

Parental Guidance recommended: Coarse language

*DOWNTON ABBEY* follows the lives of the Crawley family and the servants who work for them at the turn of the 20th century in an Edwardian English country house. Over its 6 seasons, the incredibly successful TV series garnered numerous awards. Starring Maggie Smith, Hugh Bonneville, Imelda Staunton, Penelope Wilton and many more of the original cast.



### **The Farewell (100mins)**

PG

Parental Guidance recommended: Adult themes **FINAL**

Headstrong Chinese-American Billi (Awkwafina) returns to China when her beloved grandmother is diagnosed with terminal cancer. Billi struggles with her family's decision to keep grandma in the dark about her own illness.

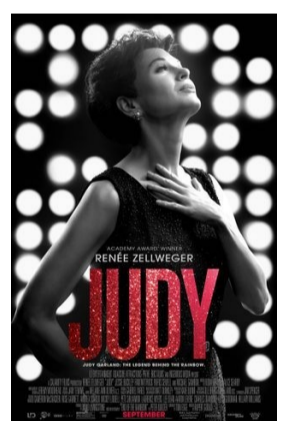


### **The Goldfinch (149mins)**

M

Suitable for Mature Audiences: Violence, offensive language, drug use **FINAL**

Theo (Ansel Elgort) was 13 years old when his mother was killed in a bombing at a museum. The tragedy changes the course of his life, sending him on an odyssey of grief and guilt, redemption and love. Through it all, he holds on to a painting of a tiny bird chained to its perch: *The Goldfinch*. Based on the bestselling novel by Donna Tartt.



### **Judy (118mins)**

M

Suitable for Mature Audiences: Drug use, offensive language **NEW**

Winter 1968 and showbiz legend Judy Garland (Renee Zellweger) arrives in Swinging London to perform a five-week sold-out run. As she prepares for the show, battles with management, charms musicians and reminisces with friends and adoring fans, her wit and warmth shine through.



### **Maiden (97mins)**

M

Suitable for Mature Audiences: Offensive language

*MAIDEN* is the inspirational true story of how 24-year-old Tracy Edwards became the skipper of the first ever all-female crew to enter the Whitbread Round the World Race in 1989. Tracy's dream is opposed on all sides: Her male competitors think an all-women crew would never make it, the press takes bets on her failure, and potential sponsors reject her.



### **Yuli (111mins)**

M

Suitable for Mature Audiences: Offensive language **FINAL**

*YULI* is based on the international career of Cuban ballet star Carlos Acosta. It stars Acosta as himself, following him from growing up on the streets of his native Cuba, through his time at the country's National Dance School, to performing at London's prestigious Royal Ballet.