



WEEKLY SCREENINGS

Week ending: Wednesday 18th December 2019

"Everything I learned I learned from the movies" – Audrey Hepburn

Monday 9th December 2019

Movie Title/Rating	Screening Time
Fisherman's Friends (M)	3.45pm
The Good Liar (R13)	6.00pm
Knives Out (M)	8.10pm

Tuesday 10th December 2019

Movie Title/Rating	Screening Time
Bellbird (M)	1.50pm
Jojo Rabbit (M)	3.45pm
Fisherman's Friends (M)	6.00pm
The Good Liar (R13)	8.15pm

Wednesday 11th December 2019

Movie Title/Rating	Screening Time
The Good Liar (R13)	1.30pm
Knives Out (M)	3.40pm
Ride Like A Girl (PG)	6.10pm
Bellbird (M) FINAL Wednesday Night Special - tickets \$10	8.10pm

Thursday 12th December 2019

Movie Title/Rating	Screening Time
The Good Liar (R13)	1.30pm
Fisherman's Friends (M)	3.40pm
The Good Liar (R13)	6.00pm
Knives Out (M)	8.10pm

Friday 13th December 2019

Movie Title/Rating	Screening Time
Jojo Rabbit (M)	1.40pm
The Good Liar (R13)	3.50pm
Knives Out (M)	6.00pm
Fisherman's Friends (M)	8.30pm

Saturday 14th December 2019

Movie Title/Rating	Screening Time
The Good Liar (R13)	11.10am
Knives Out (M)	1.20pm
Fisherman's Friends (M)	3.50pm
The Good Liar (R13)	6.10pm
Knives Out (M)	8.20pm

Sunday 15th December 2019

Movie Title/Rating	Screening Time
Knives Out (M)	10.30am
Exhibition On Screen: Van Gogh (E)	1.00pm
The Good Liar (R13)	2.50pm
Knives Out (M)	5.00pm
The Good Liar (R13)	7.30pm

Monday 16th December 2019

Movie Title/Rating	Screening Time
The Good Liar (R13)	4.00pm

Tuesday 17th December 2019

Movie Title/Rating	Screening Time
The Good Liar (R13)	1.40pm
Jojo Rabbit (M) FINAL	3.50pm
Fisherman's Friends (M)	6.00pm
Knives Out (M)	8.15pm

Wednesday 18th December 2019

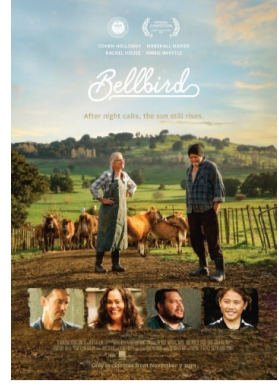
Movie Title/Rating	Screening Time
Fisherman's Friends (M)	1.15pm
Knives Out (M)	3.30pm
The Good Liar (R13)	6.00pm
Ride Like A Girl (PG) FINAL Wednesday Night Special - tickets \$10	8.10pm

Licensed Bar and Snacks available

15 Hardinge Road, Ahuriri (down the alley)

Ticket sales: www.globenapier.co.nz

Enquiries: 06 833 6011

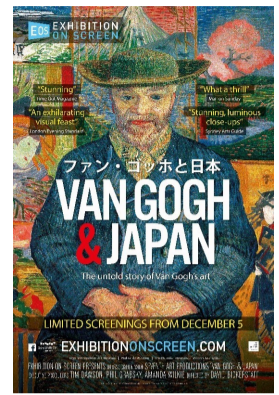
**Bellbird (96mins)**

M

Suitable for Mature Audiences: Offensive language

FINAL

Ross (Marshall Napier) has farmed the land all his life, alongside his wife Beth (Annie Whittle), who is an eager participant in the local community. When Beth suddenly dies, Ross is crushed but incapable of displaying his emotions. His son Bruce (Cohen Holloway) moves back in and tries to help.

**Exhibition On Screen: Van Gogh & Japan (95mins)**

E

Exempt from rating

Featuring Van Gogh's personal letters and written accounts by friends and contemporaries, this extraordinary and moving film reveals the fascinating story of Van Gogh's little-known deep connection to Japanese art, despite never travelling to Japan himself, and the role it has in understanding his most iconic works.

**Fisherman's Friends (112mins)**

M

Suitable for Mature Audiences: Offensive language, sexual references

Cynical London music executive Danny (Daniel Mays) heads to a remote Cornish village where he's pranked by his boss (Noel Clarke) into trying to sign a group of shanty singing fishermen (led by James Purefoy). Danny struggles to gain the respect of the unlikely boy band who value friendship and community over fame and fortune.

**The Good Liar (109mins)**

R13

Restricted: Sexual violence, violence, offensive language, nudity

Career con artist Roy Courtney (Ian McKellen) can hardly believe his luck when he meets well-to-do widow Betty McLeish (Helen Mirren) online. As Betty opens her home and life to him, Roy is surprised to find himself caring about her, turning what should be a cut-and-dry swindle into the most treacherous tightrope walk of his life.

**Jojo Rabbit (108mins)**

M

Suitable for Mature Audiences: Violence, content that may disturb

FINAL

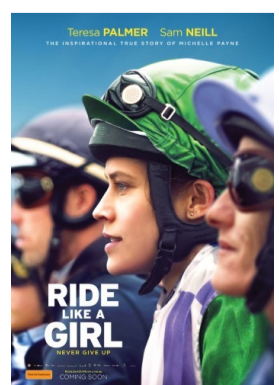
Taika Waititi's World War II satire follows a lonely German boy (Roman Griffin Davis), whose world view is turned upside down when he discovers his single mother (Scarlett Johansson) is hiding a young girl (Thomasin McKenzie) in her attic. Aided only by his idiotic imaginary friend, Adolf Hitler (Taika Waititi), Jojo must confront his naive patriotism.

**Knives Out (130mins)**

M

Suitable for Mature Audiences: Offensive language

KNIVES OUT is a fun murder mystery where everyone is a suspect. When renowned crime novelist Harlan Thrombey (Christopher Plummer) is found dead at his estate, the inquisitive Detective Benoit Blanc (Daniel Craig) is enlisted to investigate. Co-stars Jamie Lee Curtis, Michael Shannon and Toni Collette, directed by Rian Johnson.

**Ride Like a Girl (98mins)**

PG

Parental Guidance recommended: Coarse language

FINAL

RIDE LIKE A GIRL is the incredible true story of Michelle Payne (Teresa Palmer). The youngest of 10 children raised by widowed dad Paddy (Sam Neill), Michelle dreams of the impossible: winning the Melbourne Cup. With the love of her dad and her brother Stevie, Michelle does not give up.