



# WEEKLY SCREENINGS

Week ending: Wednesday 7th October 2020

"Everything I learned I learned from the movies" – Audrey Hepburn

## Monday 28th September 2020

Movie Title/Rating	Time
Hope Gap (M)	2.00pm
Savage (R16)	4.00pm
This Town (M)	6.00pm

## Tuesday 29th September 2020

Movie Title/Rating	Time
23 Walks (M) <b>FINAL</b>	2.10pm
Two Of Us (M) <i>subtitled</i>	4.15pm
Savage (R16)	6.10pm
Hope Gap (M)	8.10pm

## Wednesday 30th September 2020

Movie Title/Rating	Time
Savage (R16)	1.45pm
School Life (M) <i>subtitled</i>	3.45pm
Hope Gap (M)	6.00pm
Fatima (M) <b>FINAL</b>	8.00pm
<b>Wed Night Special—Tickets \$10</b>	

## Thursday 1st October 2020

Movie Title/Rating	Time
Hope Gap (M)	12.15pm
Two Of Us (M) <i>subtitled</i>	2.15pm
Savage (R16)	4.15pm
It Must Be Heaven (PG) <i>subtitled</i> <b>NEW</b>	6.15pm

## Friday 2nd October 2020

Movie Title/Rating	Time
School Life (M) <i>subtitled</i>	2.15pm
Romantic Road (PG) <b>NEW</b>	4.30pm
Hope Gap (M)	6.15pm
Savage (R16)	8.15pm

## Saturday 3rd October 2020

Movie Title/Rating	Time
Hope Gap (M)	12.15pm
Art On Screen: Gauguin In Tahiti (E) <i>subtitled</i>	2.15pm
Hope Gap (M)	4.10pm
Savage (R16)	6.10pm
The More You Ignore Me (M) <b>ADVANCE SESSION</b>	8.15pm

## Sunday 4th October 2020

Movie Title/Rating	Time
Romantic Road (PG)	11.45am
The More You Ignore Me (M) <b>ADVANCE SESSION</b>	1.30pm
Savage (R16)	3.30pm
Hope Gap (M)	5.30pm
It Must Be Heaven (PG) <i>subtitled</i>	7.30pm

## Monday 5th October 2020

Movie Title/Rating	Time
Hope Gap (M)	2.00pm
School Life (M) <i>subtitled</i> <b>FINAL</b>	4.00pm
Savage (R16)	6.10pm

## Tuesday 6th October 2020

Movie Title/Rating	Time
Art On Screen: Gauguin In Tahiti (E) <i>subtitled</i>	12.15pm
Savage (R16)	2.10pm
Hope Gap (M)	4.10pm
Romantic Road (PG)	6.10pm

## Wednesday 7th October 2020

Movie Title/Rating	Time
It Must Be Heaven (PG) <i>subtitled</i>	2.00pm
Two Of Us (M) <i>subtitled</i> <b>FINAL</b>	4.10pm
Hope Gap (M)	6.10pm
This Town (M) <b>FINAL</b>	8.15pm
<b>Wed Night Special—Tickets \$10</b>	

Licensed Bar and Cinema Snacks available

15 Hardinge Road, Ahuriri, Napier (down the alley)

Ticket sales: [www.globenapier.co.nz](http://www.globenapier.co.nz)

Enquiries: 06 833 6011



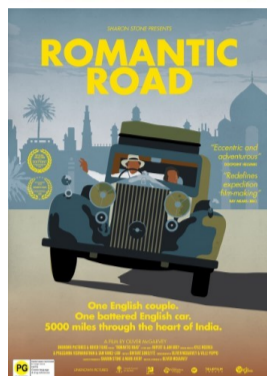
**Hope Gap** (100 mins) M Suitable for Mature Audiences: Offensive language, suicide references

Grace (Annette Bening) and Edward (Bill Nighy), married for 29 years, live in a small seaside town. When their son Jamie (Josh O'Connor) comes to visit for the weekend, Edward informs him that he plans to leave Grace that same day.



**It Must Be Heaven** (102 mins) Subtitled PG Parental Guidance recommended: Offensive language **NEW**

Elia Suleiman escapes from Palestine seeking a new homeland, only to find that Palestine is trailing behind him. The promise of a new life turns into a comedy of errors: However far he travels, from Paris to New York, something always reminds him of home.



**Romantic Road** (81 mins) PG Parental Guidance recommended: Coarse language, drug references **NEW**

Rupert and Jan Grey are a free-spirited upper-class English couple in their sixties. Not content to retire, they ignore everyone's advice and embark on a remarkable journey – to drive their 1936 Rolls Royce across India on their way to Dhaka, Bangladesh.



**Savage** (100 mins) R16 Restricted: Violence, cruelty, offensive language, sexual references

SAVAGE follows Danny (Jake Ryan) at three defining moments in his life as he grows from a boy into the violent enforcer of a gang: From abusive institutions of the 60s; to the emerging urban gang scene in the 70s; to the 80s when gangs became more violent.



**School Life** (111 mins) Subtitled M Suitable for Mature Audiences: Offensive language, sexual references **FINAL**

Samia (Zita Hanrot) is the new vice principal at an inner-city school in Paris. Despite the school's poor academic record and the majority of its enrolment coming from an infamous social housing tower block, Samia sees potential in all of them.



**The More You Ignore Me** (99 mins) M Suitable for Mature Audiences: Sex scenes, offensive language

Based on the novel by Jo Brand, this is a darkly funny story of dysfunctional family life in 1980's England. Gina's efforts to be a loving mother and wife are undermined by her declining mental health, while her daughter Alice struggles to relate to her mum.



**This Town** (91 mins) M Suitable for Mature Audiences: Offensive language, sexual references

Five years ago, Sean's (David White) family was murdered. Acquitted of the crime, he meets Casey, a young woman who believes in his innocence. Pam (Robyn Malcolm) was the officer in charge of the investigation. Tormented by the murders, she is unable to move on.



**Two of Us** (95 mins) Subtitled M Suitable for Mature Audiences: Offensive language **FINAL**

Nina (Barbara Sukowa) and Madeleine (Martine Chevallier) have been secretly in love for decades. From everybody's point of view, they are simply neighbours—until their relationship is turned upside down and Madeleine's daughter slowly unveils the truth.