



WEEKLY SCREENINGS

Week ending: Wednesday 20th October 2021

"Everything I learned I learned from the movies" – Audrey Hepburn

Monday 11th October

Movie Title/Rating	Time
Ride The Eagle (M)	1.00pm
No Time To Die (M)	2.55pm
Eiffel (M) <i>subtitled</i>	6.00pm
No Time To Die (M)	8.15pm

Tuesday 12th October

Movie Title/Rating	Time
Respect (M)	12.30pm
No Time To Die (M)	3.20pm
No Time To Die (M)	6.30pm

Wednesday 13th October

Movie Title/Rating	Time
No Time To Die (M)	12.30pm
Ride The Eagle (M)	3.40pm
No Time To Die (M)	5.35pm
The Lost Leonardo (E) FINAL Wed Night Special—Tickets \$10	8.40pm

Thursday 14th October

Movie Title/Rating	Time
Eiffel (M) <i>subtitled</i>	1.10pm
No Time To Die (M)	3.25pm
No Time To Die (M)	6.30pm

Friday 15th October

Movie Title/Rating	Time
No Time To Die (M)	11.15am
No Time To Die (M)	2.20pm
Respect (M)	5.25pm
No Time To Die (M)	8.15pm

Saturday 16th October

Movie Title/Rating	Time
Ride The Eagle (M)	10.00am
No Time To Die (M)	12.00pm
No Time To Die (M)	3.05pm
Eiffel (M) <i>subtitled</i>	6.10pm
No Time To Die (M)	8.25pm

Sunday 17th October

Movie Title/Rating	Time
No Time To Die (M)	11.00am
Eiffel (M) <i>subtitled</i>	2.05pm
No Time To Die (M)	4.20pm
Respect (M)	7.25pm

Monday 18th October

Movie Title/Rating	Time
No Time To Die (M)	2.55pm
Eiffel (M) <i>subtitled</i>	6.00pm
No Time To Die (M)	8.15pm

Tuesday 19th October

Movie Title/Rating	Time
No Time To Die (M)	12.20pm
No Time To Die (M)	3.25pm
No Time To Die (M)	6.30pm

Wednesday 20th October

Movie Title/Rating	Time
No Time To Die (M)	12.20pm
Eiffel (M) <i>subtitled</i>	3.25pm
No Time To Die (M)	5.40pm
Ride The Eagle (M)	8.45pm
Wed Night Special—Tickets \$10	

15 Hardinge Road, Ahuriri, Napier (down the alley)

Ticket sales: www.globenapier.co.nz

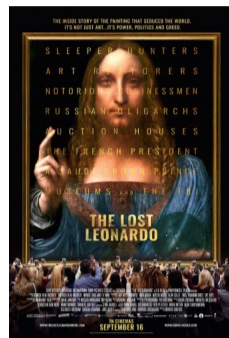
Enquiries: 06 833 6011

Eiffel (108 mins) subtitled M Suitable for Mature Audiences: Nudity, sex scenes



Engineer Gustave Eiffel (Romain Duris) is tasked with designing something spectacular for the 1889 Paris World Fair. When he encounters a mysterious woman from his past, their forbidden passion inspires Eiffel to change the Paris skyline forever.

The Lost Leonardo (101 mins) E Exempt from rating **FINAL**



This documentary tells the inside story behind the Salvator Mundi, the most expensive painting ever sold, claimed to be a long-lost masterpiece by Leonardo da Vinci. As its price soars, so do questions about its authenticity. Is this multi-million dollar painting actually by Leonardo?

No Time To Die (163 mins) M Suitable for Mature Audiences: Violence, offensive language



In NO TIME TO DIE, James Bond (Daniel Craig) has left active service and is enjoying a tranquil life in Jamaica. His peace is short-lived when his old friend Felix Leiter from the CIA turns up asking for help. The mission to rescue a kidnapped scientist turns out to be far more treacherous than expected.

Respect (145 mins) M Suitable for Mature Audiences: Offensive language



Starring Jennifer Hudson, RESPECT follows the rise of Aretha Franklin's career from a child singing in her father's church choir to international superstardom. It is the remarkable true story of the Queen of Soul's journey to find her voice.

Ride The Eagle (89 mins) M Suitable for Mature Audiences: Offensive language, sexual references



When Leif's estranged mother Honey (Susan Sarandon) dies, she leaves him a "conditional inheritance" – based on completing an elaborate to-do list. Leif steps into Honey's wild world as she tries to make amends from beyond the grave.