



WEEKLY SCREENINGS

Week ending: Wednesday 25th May 2022

Monday 16th May

Movie Title/Rating	Time
Downton Abbey: A New Era (PG)	1.30pm
Downton Abbey: A New Era (PG)	4.00pm
Operation Mincemeat (M)	6.30pm

Tuesday 17th May

Movie Title/Rating	Time
Operation Mincemeat (M)	1.00pm
Downton Abbey: A New Era (PG)	3.30pm
Elizabeth: A Portrait In Parts (E) FINAL	6.00pm
Belfast (M) FINAL	7.50pm

Wednesday 18th May

Movie Title/Rating	Time
Downton Abbey: A New Era (PG)	1.00pm
Operation Mincemeat (M)	3.30pm
Downton Abbey: A New Era (PG)	6.00pm
The Duke (M)	8.30pm
Wed Night Special—Tickets \$10	

Thursday 19th May

Movie Title/Rating	Time
Downton Abbey: A New Era (PG)	11.30am
Operation Mincemeat (M)	2.00pm
Haute Couture (M) subtitled NEW	4.30pm
A Hero (M) subtitled NEW	6.30pm

Friday 20th May

Movie Title/Rating	Time
The Duke (M)	1.30pm
Operation Mincemeat (M)	3.30pm
Downton Abbey: A New Era (PG)	6.00pm
Operation Mincemeat (M)	8.30pm

Saturday 21st May

Movie Title/Rating	Time
Operation Mincemeat (M)	10.30am
Downton Abbey: A New Era (PG)	1.00pm
Downton Abbey: A New Era (PG)	3.30pm
Operation Mincemeat (M)	6.00pm
A Hero (M) subtitled	8.30pm

Sunday 22nd May

Movie Title/Rating	Time
Downton Abbey: A New Era (PG)	10.00am
Operation Mincemeat (M)	12.30pm
Downton Abbey: A New Era (PG)	3.00pm
Haute Couture (M) subtitled	5.30pm
The Single Fin Mingle Surf Film Festival	8.00pm

Monday 23rd May

Movie Title/Rating	Time
The Duke (M) FINAL	11.30am
Downton Abbey: A New Era (PG)	1.30pm
Operation Mincemeat (M)	4.00pm
Downton Abbey: A New Era (PG)	6.30pm

Tuesday 24th May

Movie Title/Rating	Time
A Hero (M) subtitled	1.00pm
Downton Abbey: A New Era (PG)	3.30pm
Haute Couture (M) subtitled	6.00pm
Operation Mincemeat (M)	8.00pm

Wednesday 25th May

Movie Title/Rating	Time
Haute Couture (M) subtitled	1.30pm
A Hero (M) subtitled	3.30pm
Operation Mincemeat (M)	6.00pm
Downton Abbey: A New Era (PG)	8.30pm
Wed Night Special—Tickets \$10	

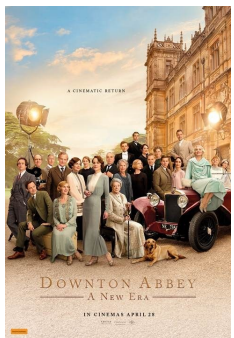
Globe Theatrette, 15 Hardinge Road, Ahuriri, Napier (down the alley)

Ticket sales: www.globenapier.co.nz

Enquiries: 06 833 6011

**A Hero (128 mins)****M****Suitable for Mature Audiences: Suicide references****NEW**

Rahim is in prison because of a debt he was unable to repay. During a two-day leave, he tries to convince his creditor to withdraw his complaint against the payment of part of the sum. But things don't go as planned. Directed by Asghar Farhadi

**Downton Abbey: A New Era (125 mins)****PG****Parental Guidance: Coarse language**

The much-anticipated cinematic return of the global phenomenon reunites the beloved cast as they go on a grand journey to the South of France to uncover the mystery of the Dowager Countess' (Maggie Smith) newly inherited villa.

**The Duke (96 mins)****M****Suitable for Mature Audiences: Sex scenes, offensive language****FINAL**

In 1961, 60-year-old taxi driver Kempton Bunton (Jim Broadbent) stole Goya's portrait of the Duke of Wellington from the National Gallery. He sent ransom notes asking the government to invest more in care for the elderly. What happened next became the stuff of legend. Co-stars Helen Mirren, directed by Roger Michell.

**Elizabeth: A Portrait In Parts (90 mins)****E****Exempt from rating****FINAL**

From director Roger Michell comes a new documentary celebrating the life and reign of Queen Elizabeth II. With unprecedented access to never-before-seen footage, ELIZABETH is a cinematic mystery-tour up and down the decades: Funny, disobedient, affectionate, mischievous, in awe. The Queen as you've never seen her before.

**Haute Couture (100 mins)****M****Suitable for Mature Audiences: Offensive language****NEW**

Esther (Nathalie Baye) is at the end of her career as Head Seamstress at Dior in Paris. One day, she gets her handbag stolen by 20-year-old Jade (Lyna Khoudri). Instead of calling the police, she decides to take care of Jade and pass on to her the craft of dressmaking.

**Operation Mincemeat (127mins)****M****Suitable for Mature Audiences: Offensive language**

Set in 1943, OPERATION MINCEMEAT follows two intelligence officers (Colin Firth and Matthew Macfadyen) who conceive a brilliant plan to trick the Nazis into thinking that Allied forces are planning to attack by way of Greece rather than Sicily. Their plan involves a corpse with fake papers, and plenty of luck.

**The Single Fin Mingle Surf Film Festival***Special Prices Apply*

Since 2015, The Single Fin Mingle has been showcasing the world's most scintillating surf films on a stage like no other. Now, for the first time ever, they are set to take a shortlist of sublime surfing films on a tour across Aotearoa.