



WEEKLY SCREENINGS

Week ending: Wednesday 10th August 2022

Monday 1st August

Movie Title/Rating	Time
Elvis (M)	12.30pm
Where The Crawdads Sing (M)	3.30pm
The Phantom Of The Open (M)	6.00pm
CIF: Three Floors (M) <i>subtitled</i>	8.10pm

Tuesday 2nd August

Movie Title/Rating	Time
The Phantom Of The Open (M)	12.45pm
Elvis (M)	2.55pm
CIF: Padrenostro (M) <i>subtitled</i>	6.00pm
Where The Crawdads Sing (M)	8.25pm

Wednesday 3rd August

Movie Title/Rating	Time
Where The Crawdads Sing (M)	1.20pm
The Phantom Of The Open (M)	3.50pm
CIF: Buona Sera Mrs. Campbell (PG) <i>subtitled</i>	6.00pm
Whina (PG)	8.20pm

Wed Night Special—Tickets \$10

Thursday 4th August

Movie Title/Rating	Time
Elvis (M)	2.55pm
Where The Crawdads Sing (M)	6.00pm
The Princess (E) NEW	8.25pm

Friday 5th August

Movie Title/Rating	Time
The Phantom Of The Open (M)	1.35pm
The Princess (E)	3.45pm
The Quiet Girl (M) <i>subtitled</i> NEW	6.00pm
Where The Crawdads Sing (M)	8.00pm

Saturday 6th August

Movie Title/Rating	Time
Whina (PG)	11.00am
Where The Crawdads Sing (M)	1.20pm
The Phantom Of The Open (M)	3.50pm
Where The Crawdads Sing (M)	6.00pm
Elvis (M)	8.30pm

Sunday 7th August

Movie Title/Rating	Time
Where The Crawdads Sing (M)	10.15am
The Quiet Girl (M) <i>subtitled</i>	12.45pm
Where The Crawdads Sing (M)	2.45pm
The Princess (E)	5.15pm
Whina (PG)	7.30pm

Monday 8th August

Movie Title/Rating	Time
Whina (PG)	1.45pm
The Quiet Girl (M) <i>subtitled</i>	4.00pm
The Phantom Of The Open (M)	6.00pm
Where The Crawdads Sing (M)	8.10pm

Tuesday 9th August

Movie Title/Rating	Time
The Princess (E)	1.15pm
Where The Crawdads Sing (M)	3.30pm
The Quiet Girl (M) <i>subtitled</i>	6.00pm
Elvis (M)	8.00pm

Wednesday 10th August

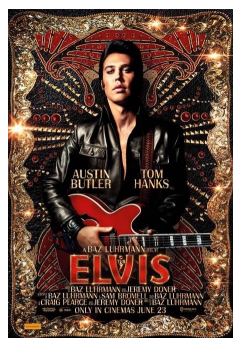
Movie Title/Rating	Time
The Quiet Girl (M) <i>subtitled</i>	1.45pm
Whina (PG)	3.40pm
Where The Crawdads Sing (M)	6.00pm
The Phantom Of The Open (M)	8.30pm

Wed Night Special—Tickets \$10

Globe Theatrette, 15 Hardinge Road, Ahuriri, Napier (down the alley)

Ticket sales: www.globenapier.co.nz

Enquiries: 06 833 6011



Elvis (159 mins)

M

Suitable for Mature Audiences: Drug use

Directed by Baz Luhrmann, ELVIS explores the life and music of Elvis Presley (Austin Butler), seen through the prism of his complicated relationship with his manager, Colonel Tom Parker (Tom Hanks), and spanning over 20 years, from Presley's rise to fame to his unprecedented stardom.



The Phantom Of The Open (106 mins)

M

Suitable for Mature Audiences: Offensive language

The remarkable true story of crane operator Maurice Flitcroft (Mark Rylance) who managed to gain entry to the 1976 British Open qualifying, despite never playing a round of golf before. With unwavering self-belief, Maurice pulls off a series of hilarious attempts to compete at the highest level of professional golf, becoming a British folk hero in the process. Co-stars Sally Hawkins and Rhys Ifans.



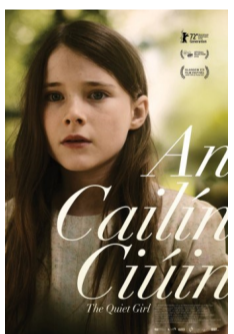
The Princess (109 mins)

E

Exempt from rating

NEW

Princess Diana's story is told exclusively through contemporaneous archive creating a bold and immersive narrative of her life and death. It also illuminates how the public's attitude to the monarchy was, and still is. "Perfectly timed, compulsively watchable" (*Variety*)



The Quiet Girl (95 mins)

M

Suitable for Mature Audiences: Offensive language

NEW

Rural Ireland in 1981. A quiet, neglected girl (Catherine Clinch) is sent away from her dysfunctional family to live with foster parents for the summer. She blossoms in their loving care, but in this house where there are meant to be no secrets, she discovers one. "One of the most exquisitely realised films of the year" (*Observer*)



Where The Crawdads Sing (125 mins)

M

Suitable for Mature Audiences: Violence, sex scenes

From the best-selling novel comes the story of Kya (Daisy Edgar-Jones), the "Marsh Girl", an abandoned girl who raised herself to adulthood in the marshlands of North Carolina. Drawn to two young men from town, Kya opens herself to a new world; but when one of them is found dead, she is cast by the community as the main suspect.



Whina (112 mins)

PG

Parental Guidance: Violence

WHINA is the story of Dame Whina Cooper (Miriam McDowell/Rena Owens), the beloved Māori matriarch who worked tirelessly to improve the rights of her people, especially women. WHINA tells the story of a woman formed by tradition, compelled by innovation, and guided by an instinct for justice. Directed by James N. Robertson.