



# WEEKLY SCREENINGS

Week ending: Wednesday 17th August 2022

## Monday 8th August

Movie Title/Rating	Time
Whina (PG)	1.45pm
The Quiet Girl (M) <i>subtitled</i>	4.00pm
The Phantom Of The Open (M)	6.00pm
Where The Crawdads Sing (M)	8.10pm

## Tuesday 9th August

Movie Title/Rating	Time
The Princess (E)	1.15pm
Where The Crawdads Sing (M)	3.30pm
The Quiet Girl (M) <i>subtitled</i>	6.00pm
Elvis (M)	8.00pm

## Wednesday 10th August

Movie Title/Rating	Time
The Quiet Girl (M) <i>subtitled</i>	1.45pm
Whina (PG)	3.40pm
Where The Crawdads Sing (M)	6.00pm
The Phantom Of The Open (M)	8.30pm
<b>Wed Night Special—Tickets \$10</b>	

## Thursday 11th August

Movie Title/Rating	Time
Where The Crawdads Sing (M)	11.20am
Ruby's Choice (PG) <b>NEW</b>	1.50pm

## Friday 12th August

Movie Title/Rating	Time
The Princess (E)	1.45pm
The Quiet Girl (M) <i>subtitled</i>	4.00pm
Where The Crawdads Sing (M)	6.00pm
Ruby's Choice (PG)	8.25pm

## Saturday 13th August

Movie Title/Rating	Time
Elvis (M)	10.40am
The Quiet Girl (M) <i>subtitled</i>	1.40pm
Whina (PG)	3.40pm
Ruby's Choice (PG)	6.00pm
Where The Crawdads Sing (M)	8.20pm

## Sunday 14th August

Movie Title/Rating	Time
The Phantom Of The Open (M)	10.30am
Ruby's Choice (PG)	12.40pm
Where The Crawdads Sing (M)	3.05pm
The Quiet Girl (M) <i>subtitled</i>	5.35pm
The Princess (E)	7.30pm

## Monday 15th August

Movie Title/Rating	Time
The Phantom Of The Open (M)	1.50pm
The Quiet Girl (M) <i>subtitled</i>	4.00pm
Ruby's Choice (PG)	6.00pm
Where The Crawdads Sing (M)	8.20pm

## Tuesday 16th August

Movie Title/Rating	Time
The Quiet Girl (M) <i>subtitled</i>	11.30am
Whina (PG)	1.30pm
The Princess (E)	3.45pm
Where The Crawdads Sing (M)	6.00pm
Ruby's Choice (PG)	8.25pm

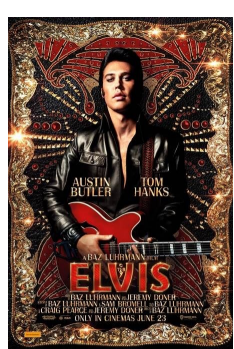
## Wednesday 17th August

Movie Title/Rating	Time
Where The Crawdads Sing (M)	1.15pm
Ruby's Choice (PG)	3.40pm
The Quiet Girl (M) <i>subtitled</i>	6.00pm
Elvis (M) <b>FINAL</b>	8.00pm
<b>Wed Night Special—Tickets \$10</b>	

Globe Theatrette, 15 Hardinge Road, Ahuriri, Napier (down the alley)

Ticket sales: [www.globenapier.co.nz](http://www.globenapier.co.nz)

Enquiries: 06 833 6011



**Elvis** (159 mins)

**M**

Suitable for Mature Audiences: Drug use

**FINAL**

Directed by Baz Luhrmann, ELVIS explores the life of Elvis Presley (Austin Butler), seen through the prism of his complicated relationship with his manager, Colonel Tom Parker (Tom Hanks), from Presley's rise to fame to his unprecedented stardom.



**The Phantom Of The Open** (106 mins)

**M**

Suitable for Mature Audiences: Offensive language

The remarkable true story of crane operator Maurice Flitcroft (Mark Rylance) who managed to gain entry to the 1976 British Open qualifying, despite never playing a round of golf before. Co-stars Sally Hawkins and Rhys Ifans.



**The Princess** (109 mins)

**E**

Exempt from rating

Princess Diana's story is told exclusively through contemporaneous archive creating a bold and immersive narrative of her life and death. It also illuminates how the public's attitude to the monarchy was, and still is. "Compulsively watchable" (*Variety*)



**The Quiet Girl** (95 mins)

**M**

Suitable for Mature Audiences: Offensive language

Rural Ireland in 1981. A quiet, neglected girl (Catherine Clinch) is sent away from her dysfunctional family to live with foster parents for the summer. She blossoms in their loving care, but in this house where there are meant to be no secrets, she discovers one. "One of the most exquisitely realised films of the year" (*Observer*)



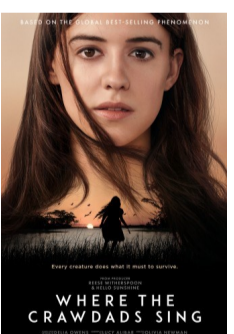
**Ruby's Choice** (117 mins)

**PG**

Parental Guidance: Violence, coarse language

**NEW**

Starring Jane Seymour, RUBY'S CHOICE is a poignant tale that follows three generations of strong Australian women. Bonded by shared moments of wisdom and joy, secrets from the past are revealed. As Ruby's dementia threatens to push them apart, the family must make a big decision.



**Where The Crawdads Sing** (125 mins)

**M**

Suitable for Mature Audiences: Violence, sex scenes

From the best-selling novel comes the story of Kya (Daisy Edgar-Jones), the "Marsh Girl", an abandoned girl who raised herself to adulthood in the marshlands of North Carolina. Drawn to two young men from town, Kya opens herself to a new world; but when one of them is found dead, she is cast by the community as the main suspect.



**Whina** (112 mins)

**PG**

Parental Guidance: Violence

WHINA is the story of Dame Whina Cooper (Miriam McDowell/Rena Owens), the beloved Māori matriarch who worked tirelessly to improve the rights of her people, especially women. WHINA tells the story of a woman formed by tradition, compelled by innovation, and guided by an instinct for justice. Directed by James N. Robertson.