



Globe Theatrette Movie Schedule

Week ending: Wednesday 11th September 2024

Monday 2nd September

Movie Title/Rating	Time
The Fabulous Four (M)	2.05pm
Blink Twice (R16)	4.10pm
It Ends With Us (M)	6.15pm

Tuesday 3rd September

Movie Title/Rating	Time
It Ends With Us (M)	1.30pm
Mr Blake At Your Service (PG) <i>subtitled</i>	4.00pm
We Were Dangerous (M)	6.10pm
Blink Twice (R16)	8.00pm

Wednesday 4th September

Movie Title/Rating	Time
Blink Twice (R16)	1.55pm
The Fabulous Four (M)	4.00pm
Mr Blake At Your Service (PG) <i>subtitled</i>	6.00pm
Fly Me To The Moon (M) FINAL	8.10pm
Wed Night Special—Tickets \$12	

Thursday 5th September

Movie Title/Rating	Time
We Were Dangerous (M)	2.15pm
Blink Twice (R16)	4.00pm
Beetlejuice Beetlejuice (M) NEW	6.05pm
It Ends With Us (M)	8.10pm

Friday 6th September

Movie Title/Rating	Time
Exhibition On Screen: My National Gallery(E)	1.45pm
Beetlejuice Beetlejuice (M)	3.50pm
Blink Twice (R16)	6.00pm
Beetlejuice Beetlejuice (M)	8.05pm

Saturday 7th September

Movie Title/Rating	Time
Mr Blake At Your Service (PG) <i>subtitled</i>	11.50am
Beetlejuice Beetlejuice (M)	2.05pm
We Were Dangerous (M)	4.15pm
Beetlejuice Beetlejuice (M)	6.00pm
Blink Twice (R16)	8.10pm

Sunday 8th September

Movie Title/Rating	Time
Beetlejuice Beetlejuice (M)	11.00am
Exhibition On Screen: My National Gallery(E)	1.05pm
Beetlejuice Beetlejuice (M)	3.15pm
Blink Twice (R16)	5.25pm
We Were Dangerous (M)	7.30pm

Monday 9th September

Movie Title/Rating	Time
Blink Twice (R16)	1.40pm
It Ends With Us (M)	3.45pm
We Were Dangerous (M)	6.15pm
Beetlejuice Beetlejuice (M)	8.00pm

Tuesday 10th September

Movie Title/Rating	Time
It Ends With Us (M)	1.30pm
The Fabulous Four (M)	4.00pm
Beetlejuice Beetlejuice (M)	6.00pm
Blink Twice (R16)	8.10pm

Wednesday 11th September

Movie Title/Rating	Time
Beetlejuice Beetlejuice (M)	1.50pm
Blink Twice (R16)	3.55pm
We Were Dangerous (M)	6.00pm
Mr Blake At Your Service (PG) <i>subtitled</i>	7.50pm
Wed Night Special—Tickets \$12	

Globe Theatrette, 15 Hardinge Road, Ahuriri, Napier (down the alley)

Ticket sales: www.globenapier.co.nz

Enquiries: 06 833 6011



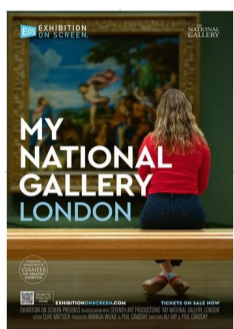
Beetlejuice (105 mins) **M** Violence, offensive language, horror, content that may offend. **NEW**

Beetlejuice is back! After an unexpected family tragedy, 3 generations of the Deetz family return home to Winter River. Still haunted by Beetlejuice, Lydia's life is turned upside down when her rebellious teenage daughter, Astrid, discovers the mysterious model of the town in the attic and the portal to the Afterlife is accidentally opened.



Blink Twice (102 mins) **R16** Restricted Audience: Brutal violence, rape, drug use, offensive language.

When tech billionaire Slater King (Channing Tatum) meets cocktail waitress Frida (Naomi Ackie) at his fundraising gala sparks fly. He invites her to join him and his friends on a dream vacation on his private island. It's paradise. Wild nights blend into sun-soaked days and everyone's having a great time. Until They're not.



Exhibition On Screen: My National Gallery (98 mins) **E** Exempt from Rating

The National Gallery of London is one of the world's greatest art galleries. It's full of masterpieces, an endless resource of history, an endless source of stories. But whose stories are told? Which art has the most impact and on whom? This film gives voice to those who work at the gallery—from cleaner to curator, security guard to director.



The Fabulous Four (99 mins) **M** Mature Audience: Offensive language, sexual references, drug use

Three lifelong friends travel to Florida to be bridesmaids at their college friend's (Bette Midler) wedding. Sisterhoods are rekindled, the past rises up again, and there's enough sparks, drinks and romance to change their lives forever.



Fly Me To The Moon (132 mins) **M** Mature Audience: Offensive language **FINAL**

A stylish comedy set against the Apollo 11 moon landing. Brought in to fix NASA's public image, marketing maven Kelly Jones (Scarlett Johansson) wreaks havoc on launch director Cole Davis's (Channing Tatum) task. When the mission is deemed too important to fail, Jones is directed to stage a fake moon landing as back-up



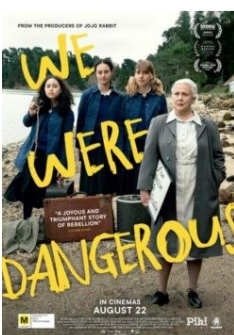
It Ends With Us (130mins) **M** Mature: Domestic violence, sexual violence references

The first Colleen Hoover novel adapted for the big screen, It Ends With Us tells the compelling story of Lily Bloom (Blake Lively), a woman who overcomes a traumatic childhood to embark on a new life in Boston and chase a lifelong dream of opening her own business.



Mr. Blake At Your Service (110 mins) **PG** Coarse Language **subtitled**

This romantic comedy stars the dynamic duo of John Malkovich and Fanny Ardant. Malkovich brilliantly takes on the role of charming British businessman Andrew Blake. In a twist of fate, Blake becomes the butler of a once-distinguished manor house, owned by the elegant yet aloof Madame de Beauvilier (Fanny Ardant).



We Were Dangerous (83mins) **M** Parental Guidance: Offence Language

In 1954 New Zealand, Nellie and Daisy attempt to escape an institution for delinquent girls, however not only are they caught, it triggers a relocation to a facility on a remote island. The duo become a trio as well-to-do Lou joins them, and life on the island takes shape under the command of devout Matron (Rima Te Wiata).