



# Globe Theatrette Movie Schedule

Week ending: Wednesday 11th February 2026

## Monday 2nd February

Movie Title/Rating	Time
Song Sung Blue (M)	12.35pm
Marty Supreme (R13)	3.10pm
The Choral (M)	6.00pm
Hamnet (M)	8.15pm

## Tuesday 3rd February

Movie Title/Rating	Time
Not Only Fred Dagg (M)	1.15pm
Song Sung Blue (M)	3.25pm
Hamnet (M)	6.00pm
The Choral (M)	8.25pm

## Wednesday 4th February

Movie Title/Rating	Time
The Choral (M)	1.15pm
Hamnet (M)	3.30pm
Song Sung Blue (M)	6.00pm
Anchor Me (E) <b>FINAL</b> <b>Wed Night Special—Tickets \$12</b>	8.35pm

## Thursday 5th February

Movie Title/Rating	Time
Hamnet (M)	1.15pm
The Choral (M)	3.45pm
Song Sung Blue (M)	6.00pm

## Friday 6th February—WAITANGI DAY

Movie Title/Rating	Time
Song Sung Blue (M)	12.35pm
Marty Supreme (R13)	3.10pm
The Choral (M)	6.00pm
Hamnet (M)	8.15pm

## Saturday 7th February

Movie Title/Rating	Time
Song Sung Blue (M)	10.00am
The Choral (M)	12.35pm
Nuremberg (M)	2.50pm
Hamnet (M)	5.40pm
Marty Supreme (R13)	8.10pm

## Sunday 8th February

Movie Title/Rating	Time
Only Fred Dagg (M)	10.00am
Hamnet (M)	12.10pm
Song Sung Blue (M)	2.40pm
The Choral (M)	5.15pm
Nuremberg (M)	7.30pm

## Monday 9th February

Movie Title/Rating	Time
Hamnet (M)	1.30pm
The Choral (M)	4.00pm
Song Sung Blue (M)	6.15pm

## Tuesday 10th February

Movie Title/Rating	Time
The Choral (M)	12.00pm
Song Sung Blue (M)	2.15pm
Not Only Fred Dagg (M)	4.50pm
Hamnet (M)	7.00pm

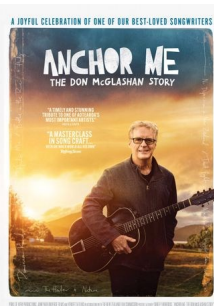
## Wednesday 11th February

Movie Title/Rating	Time
Marty Supreme (R13)	12.40pm
Hamnet (M)	3.30pm
The Choral (M)	6.00pm
Song Sung Blue (M) <b>Wed Night Special—Tickets \$12</b>	8.15pm

Globe Theatrette, 15 Hardinge Road, Ahuriri, Napier (down the alley)

Ticket sales: [www.globenapier.co.nz](http://www.globenapier.co.nz)

Enquiries: 06 833 6011



**Anchor Me** *(90 mins)*

**E** Exempt from rating

**FINAL**

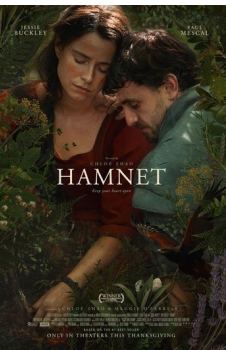
Whether through his legendary act The Front Lawn, or compositions for film and television, the songs of Don McGlashan are well known to the Kiwi ear. This captivating documentary celebrates the extraordinary journey of Don’s career.



**The Choral** *(113 mins)*

**M** Mature Audience: Offensive language, sexual references

1916. When the Choral Society in Ramsden, Yorkshire, engage a new chorus master (Ralph Fiennes), the community discovers that the best response to the chaos of war is to make music together. Directed by Nicholas Hytner.



**Hamnet** *(126 mins)*

**M** Mature Audience: Offensive language

HAMNET tells the powerful love story that inspired the creation of Shakespeare’s timeless masterpiece, *Hamlet*. Based on the 2020 novel by Maggie O’Farrell, it stars Paul Mescal as William Shakespeare and Jessie Buckley as his wife.

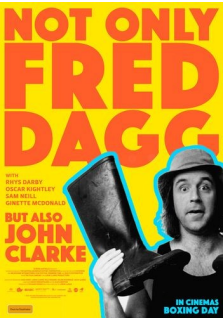


**Marty Supreme** *(150 mins)*

**R13**

**Restricted:** Violence, sex scenes, offensive language , nudity, wound detail

Marty Mauser (Timothee Chalamet), a young man with a dream no one respects, goes to hell and back in pursuit of greatness. “A huge-hearted epic about love, family, friendship, talent, ambition... and ping-pong” (NME)



**Not Only Fred Dagg** *(107 mins)*

**M** Mature Audience: Offensive language

When satirist John Clarke died in 2017, the world mourned an icon. In a remarkable series of recorded conversations, John and his daughter (writer/director Lorin Clarke) offer delightful insights into his four decades in the entertainment industry.



**Nuremberg** *(148 mins)*

**M** Mature Audience: Holocaust imagery, suicide

Germany at the end of WWII. While the Allies aim to ensure the Nazi regime answers for the horrors of the Holocaust, a US Army psychiatrist (Rami Malek) is locked in a psychological duel with former Reichsmarschall Herman Göring (Russell Crowe).



**Song Sung Blue** *(132 mins)*

**M** Mature Audience: Offensive language, mental health themes

Based on a true story, two down-on-their-luck musicians (Hugh Jackman and Kate Hudson) form a joyous Neil Diamond tribute band, proving it’s never too late to find love and follow your dreams.