



Globe Theatre Movie Schedule

Week ending: Wednesday 25th February 2026

Monday 16th February

Movie Title/Rating	Time
The Choral (M)	11.40am
Song Sung Blue (M)	1.55pm
Hamnet (M)	4.30pm
Wuthering Heights (M)	7.00pm

Tuesday 17th February

Movie Title/Rating	Time
Wuthering Heights (M)	12.30pm
Marty Supreme (R13)	3.10pm
The Choral (M)	6.00pm
Wuthering Heights (M)	8.15pm

Wednesday 18th February

Movie Title/Rating	Time
Not Only Fred Dagg (M) FINAL	1.10pm
Wuthering Heights (M)	3.20pm
Song Sung Blue (M)	6.00pm
Hamnet (M)	8.35pm
Wed Night Special—Tickets \$12	

Thursday 19th February

Movie Title/Rating	Time
Wuthering Heights (M)	12.45pm
Song Sung Blue (M)	3.25pm
Fackham Hall (M) NEW	6.00pm

Friday 20th February—Art Deco Festival

Movie Title/Rating	Time
Twentieth Century (PG)	2.10pm
Carefree (G)	4.10pm
Twentieth Century (PG)	6.00pm
Carefree (G)	8.00pm

Saturday 21st February—Art Deco Festival

Movie Title/Rating	Time
Fackham Hall (M)	10.15am
Carefree (G)	12.20pm
Carefree (G)	2.10pm
Twentieth Century (PG)	4.00pm
Carefree (G)	6.00pm
Wuthering Heights (M)	7.50pm

Sunday 22nd February—Art Deco Festival

Movie Title/Rating	Time
Carefree (G)	11.50am
Twentieth Century (PG)	1.40pm
Carefree (G)	3.40pm
Twentieth Century (PG)	5.30pm
Carefree (G)	7.30pm

Monday 23rd February

Movie Title/Rating	Time
Fackham Hall (M)	2.45pm
The Choral (M)	4.45pm
Wuthering Heights (M)	7.00pm

Tuesday 24th February

Movie Title/Rating	Time
Wuthering Heights (M)	1.25pm
Fackham Hall (M)	4.00pm
Song Sung Blue (M)	6.00pm
Wuthering Heights (M)	8.35pm

Wednesday 25th February

Movie Title/Rating	Time
Hamnet (M)	12.50pm
Wuthering Heights (M)	3.20pm
Fackham Hall (M)	6.00pm
Marty Supreme (R13) FINAL	8.00pm
Wed Night Special—Tickets \$12	

Globe Theatre, 15 Hardinge Road, Ahuriri, Napier (down the alley)

Ticket sales: www.globenapier.co.nz

Enquiries: 06 833 6011



Art Deco Festival

Special Prices Apply

Oscar-nominated film CAREFREE (1938) reunites Ginger Rogers and Fred Astaire in a romantic comedy musical with unforgettable songs by Irving Berlin. + + + + +
Howard Hawks' 1934 screwball comedy classic TWENTIETH CENTURY stars John Barrymore and Carole Lombard as two bickering lovers on Broadway.



The Choral (113 mins)

M Mature Audience: Offensive language, sexual references

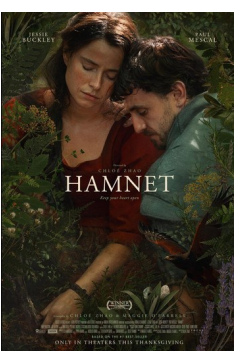
1916. When the Choral Society in Ramsden, Yorkshire, engage a new chorus master (Ralph Fiennes), the community discovers that the best response to the chaos of war is to make music together. Directed by Nicholas Hytner.



Fackham Hall (97 mins)

M Mature Audience: Violence, sexual references, offensive language **NEW**

Mistaken identities, forbidden love, and one very inconvenient corpse turn the grand English manor of Fackham Hall into total bedlam in this comedy of class, romance, manners, and mischief. Stars Damien Lewis, Thomasin Mackenzie.



Hamnet (126 mins)

M Mature Audience: Offensive language

HAMNET tells the powerful love story that inspired the creation of Shakespeare's timeless masterpiece, *Hamlet*. Based on the 2020 novel by Maggie O'Farrell, it stars Paul Mescal as William Shakespeare and Jessie Buckley as his wife.



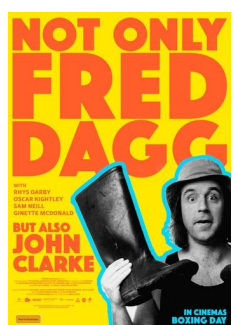
Marty Supreme (150 mins)

R13

FINAL

Restricted: Violence, sex scenes, offensive language , nudity, wound detail

Marty Mauser (Timothee Chalamet), a young man with a dream no one respects, goes to hell and back in pursuit of greatness.



Not Only Fred Dagg (107 mins)

M Mature Audience: Offensive language **FINAL**

In a series of conversations, satirist John Clarke and his daughter (director Lorin Clarke) offer delightful insights into John's decades in the entertainment industry.



Song Sung Blue (132 mins)

M Mature Audience: Offensive language, mental health themes

Based on a true story, two down-on-their-luck musicians (Hugh Jackman and Kate Hudson) form a joyous Neil Diamond tribute band, proving it's never too late to find love and follow your dreams.



Wuthering Heights (136 mins)

M Mature Audience: Sex scenes, offensive language

Set against the backdrop of the Yorkshire moors, WUTHERING HEIGHTS explores the intense relationship between Heathcliff (Jacob Elordi) and Catherine Earnshaw (Margot Robbie), whose forbidden passion turns from romantic to intoxicating.